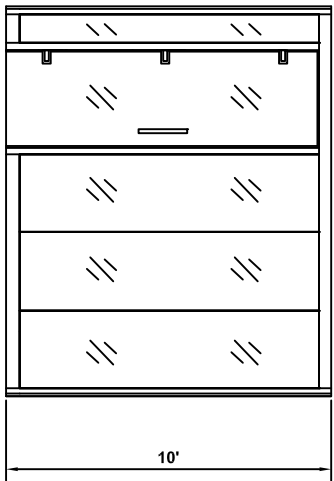


C-10 (10'-0" CLG HGT) CLEAR GLASS WALL
 1 - FULL HEIGHT GLASS PIVOT DOOR WITH
 18" NON LOCKING PULL
 FINISH - CLEAR GLASS WITH ANODIZED
 TRIM COLOR



P.O. BOX 9016 HOLLAND, MI 49422
 ph: 866-584-0201 fax: 866-645-8419

- 1 Becca Runchout
- 2 Becca Smith Runchout
- 3 Becca Runchout
- 4 Becca Runchout
- 5 Becca Runchout
- 6 Becca Runchout
- 7 Becca Runchout
- 8 Becca Runchout
- 9 Becca Runchout
- 10 Becca Runchout

Review this specification carefully.
 You assume responsibility for
 accuracy of field dimensions, design
 layout & specifications.

APPROVED BY: _____

DATE:	04/07/2017
SCALE:	
DRAWN BY:	TAW
SHEET:	1 of 1
DRAWING SIZE:	B

REVISION LEVEL	

DEALER	Trendway Corp
PROJECT	12' Clear Wall
JOB NUMBER	
QUOTE NUMBER	Typical



Quote#
Date: 3/7/2018
Dealer:
Drawn By: Unknown
Rep / MM:

Line #	Qty	Part Number		List	Ext List
1	1	GWDSA10	36"W Pivot Door Section, 33" opening, 10' Height	\$ 6,572.00	\$ 6,572.00
		...	Skipped Option	\$ 0.00	
		...	Skipped Option	\$ 0.00	
		.18N	18" Post Pull (12"c-c) no Lock	\$ 546.00	
		.T6	Premium Anodized Trim Colors	\$ 226.00	
		.EC	Satin Etch	\$ 0.00	
2	1	GWICS10.PW12.08.0	8" Clear Glass Insert, Straight, 10' Height	\$ 947.00	\$ 947.00
		...	Skipped Option	\$ 0.00	
		~.T6	~Premium Anodized Trim Colors	\$ 0.00	
		~.EC	~Satin Etch	\$ 0.00	
3	3	GWICS10.PW36.30.3	30 3/8" Clear Glass Insert, Straight, 10' Height	\$ 1,404.00	\$ 4,212.00
		...	Skipped Option	\$ 0.00	
		~.T6	~Premium Anodized Trim Colors	\$ 0.00	
		~.EC	~Satin Etch	\$ 0.00	
4	2	GWLBS144	Lower Beam Assembly, 12' Length	\$ 1,805.00	\$ 3,610.00
		.T6	Premium Anodized Trim Colors	\$ 226.00	
		.EC	Satin Etch	\$ 0.00	
5	2	GWUBS144	Upper Beam Assembly, 12' Length	\$ 1,128.00	\$ 2,256.00
		.T6	Premium Anodized Trim Colors	\$ 226.00	
		.EC	Satin Etch	\$ 0.00	
6	2	GWWS10	Hardwall Transition Post, 10' Height	\$ 864.00	\$ 1,728.00
		.T6	Premium Anodized Trim Colors	\$ 226.00	
		.EC	Satin Etch	\$ 0.00	
				Total:	\$ 19,325.00