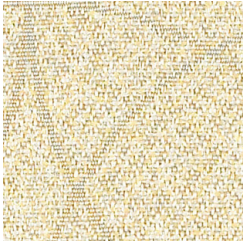
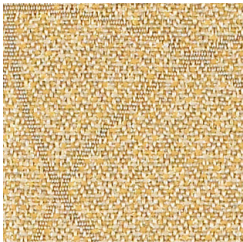


Cocoa - K00



Putty - K03



Honey - K02



Graphite - K01

ENCORE

| | |
|----------------------------------|---|
| Application | Consult current price lists for product applications |
| Grade | 2 |
| Pattern | Directional |
| Content | 61% Post-Consumer Recycled Polyester, 39% Polyester |
| Weight | 11.68 oz. per linear yard |
| Width | 66" |
| Colorfastness to Light | 40 Hours, Class 4 |
| Colorfastness to Crocking | Grade 3 - Dry, Grade 3 - Wet |
| Flammability Rating | ASTM E-84, Class 1 or A |
| UL Listed | Meets UL requirements |
| Manufacturer | Momentum Textiles |
| Note | Color may vary slightly between manufacturer's dye lots |
| Care Instructions | To keep fabric from becoming soiled, manufacturer recommends frequent vacuuming or light brushing to remove dirt and grime. Spot clean when necessary with mild solvent, upholstery shampoo or foam from a mild detergent. If the fabric becomes soiled overall, use a professional cleaning service. |