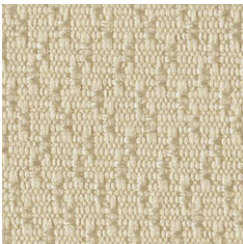
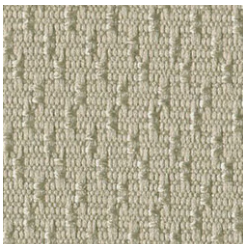




White Out - AH2



Icing - AH4



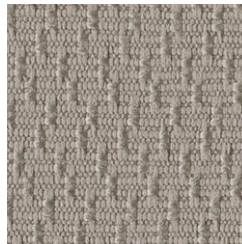
Snowcap - AH7



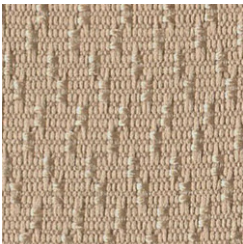
Dew - AH3



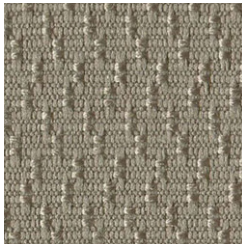
Crystals - AH6



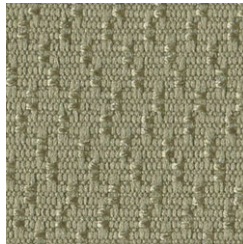
Glaze - AH9



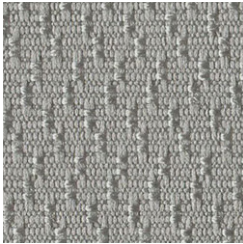
Sleet - AH8



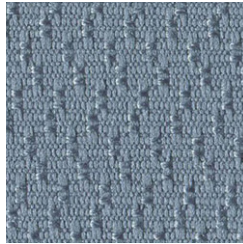
Glacier - AJ3



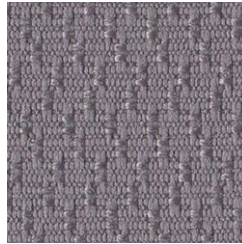
Blizzard - AJ0



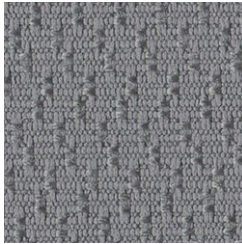
Flurries - AH5



Chilled - AJ4



Arctic - AJ1



Wintry - AJ2



Black Ice - AJ5

FROST

Application	Consult current price lists for product applications
Grade	1
Pattern	Directional
Content	77% Pre-Consumer, 23% Post-Consumer Recycled Polyester
Weight	12 oz. per linear yard
Width	66"
Colorfastness to Light	40 Hours, Class 5
Colorfastness to Crocking	Grade 5 - Dry, Grade 5 - Wet
Flammability Rating	ASTM E-84, Class 1 or A
UL Listed	Meets UL requirements
Note	Color may vary slightly between manufacturer's dye lots
Care Instructions	To keep fabric from becoming soiled, manufacturer recommends frequent vacuuming or light brushing to remove dirt and grime. Spot clean when necessary with mild solvent, upholstery shampoo or foam from a mild detergent. If the fabric becomes soiled overall, use a professional cleaning service.